

## **If MinnesotaCare gets cut, it's going to hurt the vulnerable among us. And many, many more.**

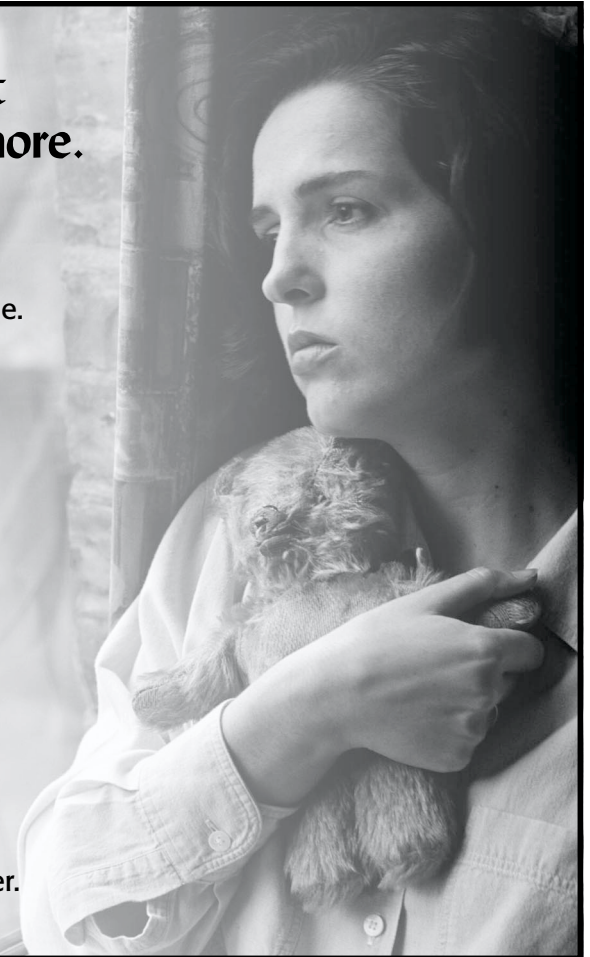
Many of our sisters and brothers in this community and throughout Minnesota depend on MinnesotaCare for basic health insurance for themselves and their families. Unlike welfare programs, every MinnesotaCare family pays monthly premiums, based on their income.

But in Saint Paul, the Governor and some legislators propose cutting over 40,000 of our hard-working neighbors from MinnesotaCare coverage - forcing them into an impossible choice of either going without coverage or depleting their family's meager assets to qualify for welfare.

What's worse, this plan won't save money. It just shifts costs, causing health insurance premiums to rise, forcing employers to reduce or even drop coverage altogether. These cuts hurt more than MinnesotaCare families, they hurt every family.

### **A Call to Action.**

Call and/or write Governor Pawlenty and our legislators. Tell them to restore MinnesotaCare to what it was meant to be - a quality health insurance plan for people who can't get coverage from their employer.





*The Joint Religious Legislative Coalition urges you to*  
**Contact Governor Pawlenty and Legislators.  
Urge them to protect MinnesotaCare.**

**Governor Tim Pawlenty**

130 State Capitol, St. Paul, MN 55155

**Telephone:** (651) 296-3391 or (800) 657-3717 toll free

**E-mail:** tim.pawlenty@state.mn.us

**Senate Majority Leader Dean E. Johnson**

208 State Capitol, St. Paul, MN 55155

**Telephone:** (651) 296-3826

**E-mail:** sen.dean.johnson@senate.mn

**House Speaker Steve Sviggum**

463 State Office Building, St. Paul, MN 55155

**Telephone:** (651) 296-2273

**E-mail:** rep.steve.sviggum@house.mn

**To contact local legislators:**

**House:** (651) 296-2146

Toll-free: (800) 657-3550

**Senate:** (651) 296-0504

Toll-free: (888) 234-1112